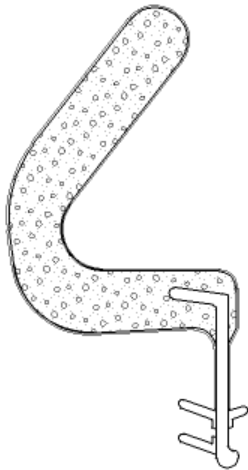


Engineered Solutions. Trusted Results.



REACH: 0.825"

## Q-LON® .825 (U11)

Composed of open cell foam and a polyethylene liner which provides maximum long-term performance with low compression force, and resistance against compression set. Retains its original shape year after year to maintain an excellent weatherseal. A dual durometer insert allows for easy insertion and maximum retention. It is removable without damaging the jamb or seal.

### Product Highlights

- Recommended for: aluminum, composite, vinyl, and wood
- Kerf Width 0.125"(3.2mm)
- Kerf Depth 0.438"(11.1mm)
- Rabbet Depth 2-1/8"(54mm)
- Reach 0.825"(20.96mm)
- Excellent memory – returns to original shape after long compression
- Stability – low / no stretch gained by rigid insert or glass fiber internal cord
- Easily compressed – low compression forces, unaffected by temperature variance
- Acoustics – outstanding acoustic performance
- Thermal conductivity – unrivaled thermal performance
- Paint and stain-proof – properties unaffected by standard paints and stains
- Stabilized – unaffected by rot, fungi, UV-light, or ozone
- Temperatures – wide operating range under extremely cold and warm weather conditions

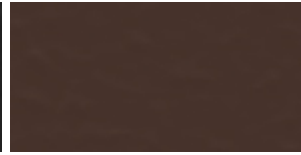
### Available Colors



Beige



Black



Bronze



White