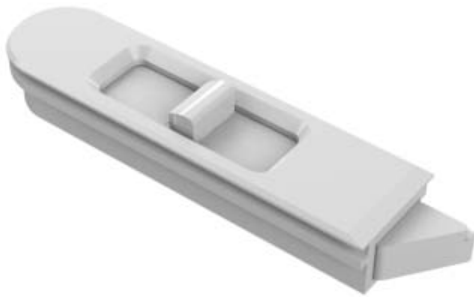


Engineered Solutions. Trusted Results.

TILT LATCHES

SightLine Flex-Fit For Vinyl



Our Sightline tilt latches are made from a high performing nylon material to deliver a tough, durable latch. Featuring a continuous rail that wraps around the latch housing to prevent the risk of failure under structural load, the SR1 slide in version for wood improves window aesthetics with its streamline, flush to sash appearance. Engineered for performance and developed for manufacturing.

product highlights

- Recommended for: composite and vinyl
- Designed to deliver a smooth quality feel, with easier and quieter operation for
- Stainless steel spring for corrosion resistance
- Fits snugly in check rail with friction fit or single screw
- Slide-in installation with smooth operation and feel
- Proven marketplace design for vinyl, now applied to wood, with no route change needed

Available Colors

Browns



Earth Brown

Tans



Almond

Whites



White