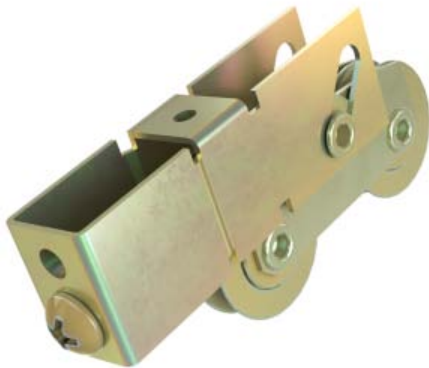


Engineered Solutions. Trusted Results.

ROLLERS

End Adjust 1936

With the broadest line of patio door roller solutions in the industry our precision grade bearings are of the best quality in the industry and are a perfect solution for today's heavy panels.



Product Highlights

- Housing material = mild steel, stainless steel
- Bearing materials = mild steel, stainless steel, nylon bearing performance
- Standard & precision bearing diameters - 1.000", 1.120", 1.250", 1.143" & 1.500"
- Adjustment = 0.420"

Available Colors



Stainless Steel



Steel