

Engineered Solutions. Trusted Results.

WINDOW OPEN CONTROL DEVICES

74050 DM-1 WOCD

AmesburyTruth's 74050 WOCD has been tested to ASTM F2090 and fits the same cut out as the DM-1 vent stop. The WOCD is quickly and easily snapped in using Flex-Fit technology.



Product Highlights

- Recommended for: composite and vinyl
- Tested to meet ASTM F2090
- When properly installed and engaged, prohibits the free passage of a 4" diameter rigid sphere
- Once released and when the window sash is returned to a fully closed position, the WOCD mechanism will automatically reset
- Requires two WOCD for each window sash
- Flex-Fit technology adjusts perfectly to extrusion thicknesses from .050" to .100
- Fits DM-1 vent stop cut out (1.856" X .272" housing)

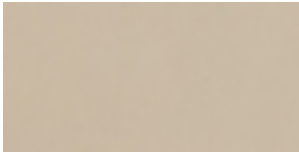
Available Colors

Browns



Earth Brown

Tans



Adobe



Almond



Beige



Adobe