

Engineered Solutions. Trusted Results.



LOCKS

24 Series

Designed to complement a wide variety of vinyl, aluminum and fiberglass window applications, handles lock and unlock sashes when moved vertically. For casement applications that may have a hard-to-reach second locking point, some handles use a tie bar which allows the locking points to work in tandem. The nose has a slight taper, which improves keeper engagement and offers .437" pull-in.

Product Highlights

- Face-mounted and rear-mounted styles available
- Available in single or two lock points
- A strong detent in both open and closed positions creates a solid and secure feel
- Hold up to 200lbs. of force per lock for negative air pressure and forced entry resistance
- Various hook lengths give maximum reach to help pull in and seal sagging windows.
- Can be connected with a tie bar handle-to-handle or handle-to-cam for simultaneous locking
- High pressure zinc diecast locking handle and housing with a stainless steel strike

Available Colors

Blacks



Black



Matte Black

Brasses



Antique Brass



Bright Brass

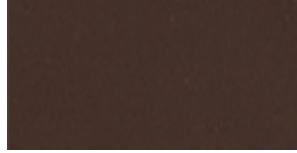
Browns



Bronze



Chestnut Bronze



Faux Bronze

Chromes



Satin Chrome

Golds

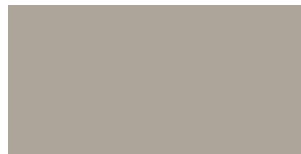


Goldtone

Greys



Aluminum



Faux Nickel

Nickels



Satin Nickel

Oil Rubbed Bronzes



Oil Rubbed Bronze

Tans

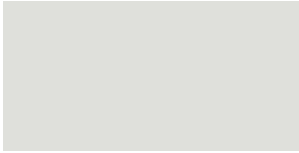


Beige

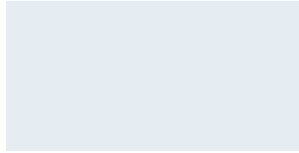


Sahara Beige

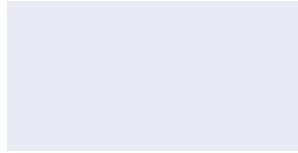
Whites



32 White



Bright White



Bright White



Snow White



White