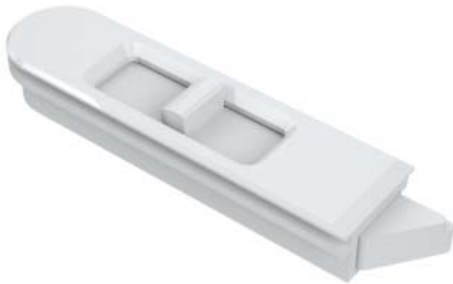


Engineered Solutions. Trusted Results.

TILT LATCHES

SightLine For Wood



Our Sightline tilt latches are designed to deliver a smooth quality feel, with easier and quieter operation. Made from a high performing nylon material to deliver a tough and durable latch with a corrosion resistant stainless steel spring. Fiberglass fill helps prevent risk of failure under structural load and a robust design to maintain seal integrity. Engineered for performance and developed for manufacturing.

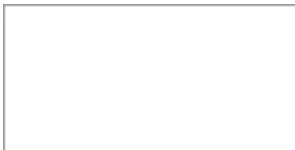
Available Colors

Tans



Almond

Whites



White